



Benefits...

Saves Time

No more time consuming manual calculation of staff worked hours and pay.
Instantly knows who's not in/in/out.
Report generation can be automated.

Saves Money

Runs on existing computers.
No overpaying staffs.
No punch clock ink and punch cards.
Built-in payroll.
Built-in staff leave records.

Easy

Very easy to setup.
Very easy to use.

Flexible

Single or multiple punch stations.
Staffs can punch in/out at their own office computers.
Managers can track staff attendance on their PCs.
Supports many staff work shift types.
Supports many staff pay types.
Supports tracking of visitors & class attendance.

Features...

- **Prevents buddy punching with Biometric Fingerprint Scanner & Webcam**
Captures photo of staff punching in/out.
- **Instantly checks staff attendance and punctuality**
Checks who's not in, who's in and who's out now.
Immediately gathers who's in the office during emergencies.
- **Tracks reasons for being late or knocking off early**
Staff can be asked to enter a remark when he is late and when he leaves early.
- **Staff can punch in/out at his own computer**
BePunctual Staff Punch Station can be installed in staff computers to let staffs punch in/out conveniently at their own computers.
- **Comprehensive Work Shift Support**
Normal working hours, flexi-time, alternate week working days etc.
- **Built-In Comprehensive Payroll**
Salary, daily and hourly pay types.
Monthly, semi-monthly, bi-weekly and weekly pay period.
Working day pay, overtime pay, non-working day pay.
- **Built-In Leave Records**
You can use BePunctual to record staff approved leave.
Reports generated take into account of staff no pay leave.
- **Comprehensive Reports**
Staff Working Days and Hours Report, Attendance Report, Punctuality Report, Staff Worked Hours Reports, and Staff Pay Report.
- **Instant Messaging**
Administrator can contact staff at punch station and vice versa.
- **Remotely Configurable**
Punch software can be remotely configurable at the BePunctual Server software.
- **Customizable Interface**
Punch software can be customized to your corporate identity.



BePunctual

Complete Employee Biometric Fingerprint Time and Attendance Tracking Solution

Minimum System Requirements

OS : Windows 2K / XP / Vista / 7
CPU : Pentium 4 and above
RAM : 1 GB RAM
HDD : 20 MB hard disk space.

Download free trial at...

<http://www.bepunctual.com>

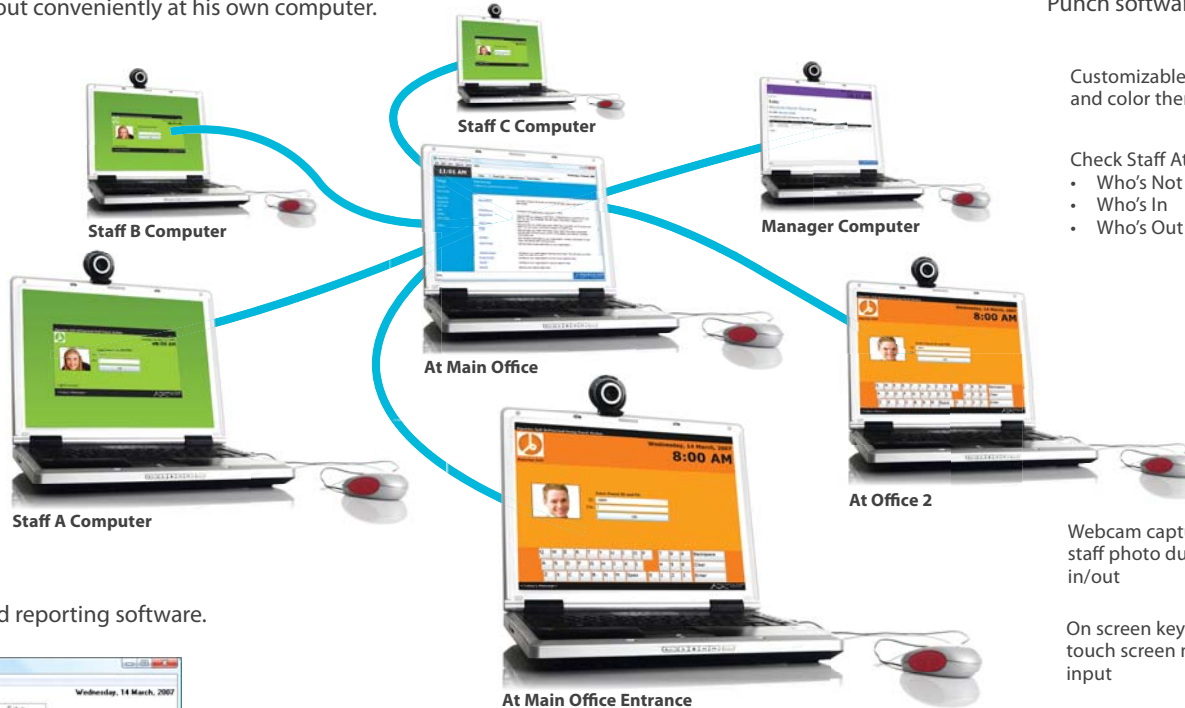
BePunctual Software Components and Deployment

BePunctual Staff Punch Station

Punch software for staff to punch in/out conveniently at his own computer.

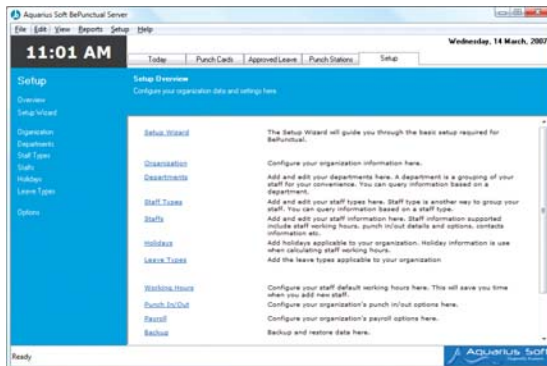


Broadcast today's message to all staffs



BePunctual Server

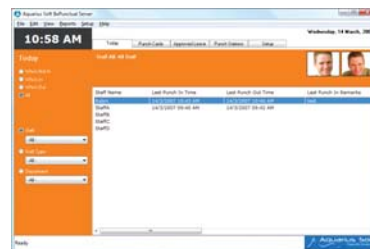
Main configuration, management and reporting software.



Setup Pages

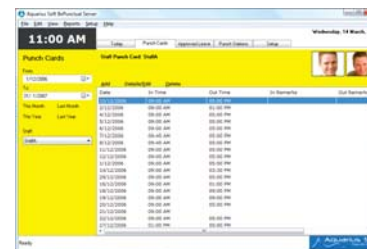
Lets you setup the following easily:

- Organization Information
- Staff Types
- Departments
- Holidays
- Staff Types
- Leave Types



Today Page

Checks staff attendance.
Checks for buddy punching.



Punch Cards Page

View and edit staff punch card entries.

NOTE: For single computer solution, the Server software and Group Punch Station software are installed in the same computer.

BePunctual Group Punch Station

Punch software for all staffs to punch in/out at one or more locations.

Customizable Logo and color theme

Check Staff Attendance:

- Who's Not In
- Who's In
- Who's Out

Webcam captures staff photo during punch in/out

On screen keyboard for touch screen monitor input



BePunctual Manager Station

Software for managers to track their staffs' attendance and generate reports.

